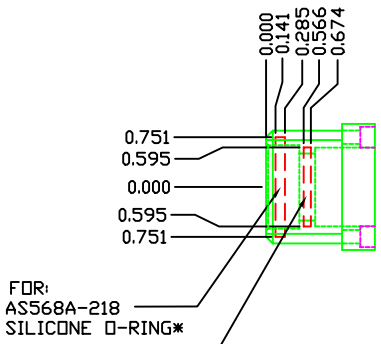


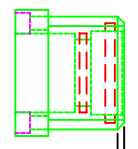
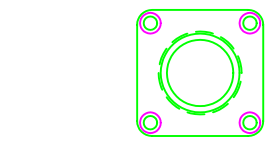
REVISIONS		
REV	DESCRIPTION	DATE
-	ORIGINAL RELEASE	5/4/08



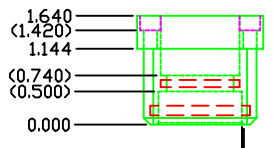
FDR:  
AS568A-218  
SILICONE O-RING\*

FDR:  
AS568A-120  
SILICONE O-RING\*

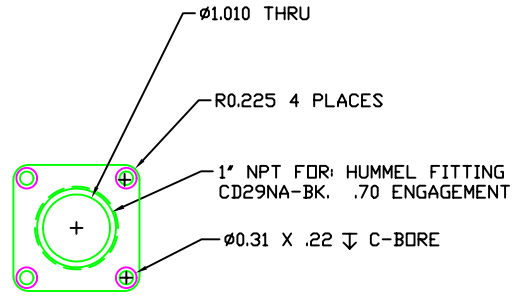
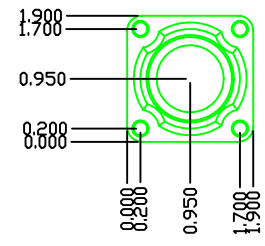
\*SEE COMMENTS



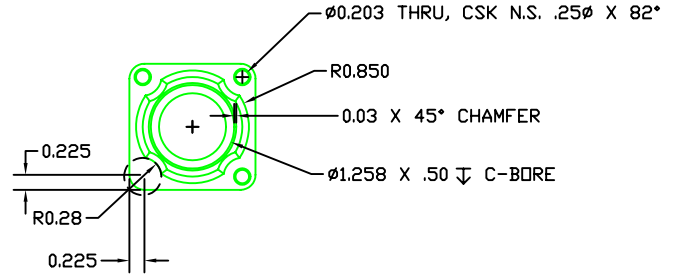
0.10 X 45° CHAMFER TYPICAL



(0.03 X 45° CHAMFER)



TOP VIEW



BOTTOM VIEW

UNLESS OTHERWISE SPECIFIED DIMENSIONS ARE IN INCHES					
x/x	.XX	.XXXX			
± 1/16	± .010	± .0005			
.X	.XXX	ANGLE		NAME	DATE
± .050	± .005	± 1/2"		SWB	5/14/08
MATERIAL 6061-T6			DRAWN		
FINISH TUMBLED			CHECKED		
BREAK ALL SHARP EDGES UNLESS NOTED OTHERWISE			COMMENTS: TEST FIT AS568A-218 O-RING WITH 1.25" DIAMETER TUBING. TEST FIT AS568A-120 O-RING WITH 1.00" DIAMETER TUBING.		
PART NAME / DESCRIPTION					REV. -
SCALE: 1:1	PART#			SHEET 1 OF 1	